

Harnesses



the why, what, and how

MANY PEOPLE WORRY THAT A HARNESS WILL "MAKE" THEIR DOG PULL OR ENCOURAGE IT. THIS ISN'T THE CASE. DOGS WILL PULL, TO GET TO A SCENT, TO GET AWAY FROM SOMETHING THEY DON'T LIKE, TO GET TO THE PARK QUICKLY, BECAUSE THEY HAVE FOUR LEGS AND ARE FASTER THAN US. THESE ARE JUST SOME OF THE REASONS.

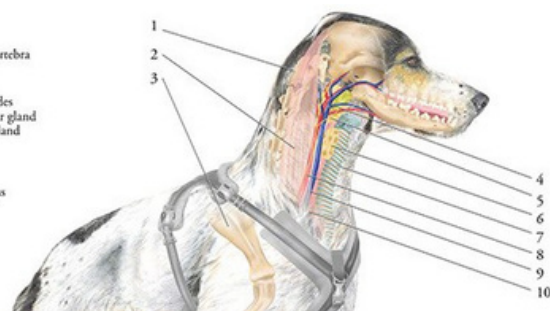
AND IF THEY DO PULL, IT'S MUCH BETTER THAT THE FORCE CREATED IS DISTRIBUTED THROUGHOUT THE TRUNK, THE STRONGER PART OF THE BODY, RATHER THAN BE CONCENTRATED AROUND THE DOG'S NECK WHICH IS FULL OF REALLY IMPORTANT GLANDS, MUSCLES AND NERVES THAT THE DOG REQUIRES SURVIVE.

PRESSURE ON THE NECK CAN CAUSE:

**EYE PROBLEMS
COLLAPSED TRACHEA
SYRINGOMYELIA
SENSITIVE THROATS
THYROID DISORDERS
OBSTRUCTIONS TO BLOOD FLOW AND NEURAL PATHWAYS.**

Key

- 1 Cervical vertebra
- 2 Muscles
- 3 Scapula
- 4 Lymph nodes
- 5 Mandibular gland
- 6 Thyroid Gland
- 7 Trachea
- 8 Artery
- 9 Vein
- 10 Oesophagus



Harnesses

the why, what, and how

NOT ONLY CAN JOLTS OR PRESSURE ON THE NECK CAUSE FATAL PHYSICAL DAMAGE, WE CAN ALSO CREATE EMOTIONAL ISSUES. THE DOG MAY START TO LINK THINGS IN THE ENVIRONMENT, OTHER DOGS, JOGGERS, SQUIRRELS, FOR EXAMPLE, WITH PRESSURE OR PAIN TO THEIR NECK. THIS CAN CREATE A REACTION FROM THE DOG WHEN SEEING THESE TRIGGERS AS THEY BECOME LINKED TO DISCOMFORT.

FOR OUR DOGS TO WALK NICELY WITH US, WE WANT THEM TO FEEL COMFORTABLE AND IN BALANCE AND WE TOO, SHOULD BE COMFORTABLE AND IN BALANCE. NON PULL HARNESSSES OR HARNESS THAT RESTRICT MOVEMENT, IN MY EXPERIENCE DO NOT WORK. THE MORE WE RESTRICT THEIR NATURAL GAIT THE HARDER THEY WILL WORK TO STRETCH AND WALK NORMALLY, THEREBY CAUSING THEM TO PULL. NOT JUST THIS BUT HARNESS THAT CUT ACROSS THE SHOULDERS WILL CAUSE JOINT PAIN. PAIN IS THE UNDERLYING DRIVER BEHIND 80-90% OF BEHAVIOUR "ISSUES" THAT I SEE.



Harnesses



the why, what, and how

A GOOD HARNESS SHOULD HAVE A "Y" FRONT, ALLOWING FOR FREEDOM OF MOVEMENT. THE FRONT OF THE HARNESS SHOULD SIT ON THE STERNUM, THE KNOBBLY BIT ON THEIR CHEST, AND NO HIGHER, THE SIDES SHOULD SIT 2" BEHIND THE ELBOW AND THE BACK/TOP SHOULD NOT SLIP TO OR BEYOND T10 ON THE SPINE. THIS IS THE POINT WHERE YOU MAY SEE A SLIGHT DIP WHERE THE VERTEBRAE START FACING IN THE OPPOSITE DIRECTION.

IT SHOULD FIT WELL AND IT IS USEFUL IF IT HAS A D RING ON THE FRONT AS WELL AS THE BACK. THE BACK RING CAN BE USED TO INDICATE TO YOUR DOG THAT THIS IS HIS WALK AND HE CAN GO WHERE EVER HE WANTS TO SNIFF AND EXPLORE AND WE WILL FOLLOW.

WHEN YOU WANT TO DO SOME NICE BALANCED LOOSE LEAD WALKING ATTACH A DOUBLE ENDED LEAD TO THE FRONT AND THE BACK. THIS WILL HELP THE DOG NOT TO PULL AND TO FEEL COMFORTABLE AND BALANCED. THIS CAN THEN BE REINFORCED WITH TREATS.

DIFFERENT HARNESSES MAY SUIT DIFFERENT COAT TYPES.

WE RECOMMEND:

BALANCE HARNESSES WHICH ARE LIGHTWEIGHT, EASY TO FIT AND DO NOT GET HEAVY WHEN WET. THESE CAN BE PURCHASED FROM THE HEALTHY PET STORE.

**MADE TO MEASURE PERFECT FIT HARNESS FROM DOG GAMES:
EMAIL: INFO@DOG-GAMES.CO.UK; [HTTPS://WWW.PERFECT-FIT-DOG-HARNESS.COM/](https://www.perfect-fit-dog-harness.com/)**



Balance Harnesses

DESIGNED BY LORI STEVENS, CERTIFIED DOG TRAINER AND MADE IN THE USA, THE UNIQUE BALANCE HARNESS™ HAS 6 ADJUSTMENT POINTS OFFERING A CUSTOMISED FIT FOR COMFORT, COMPLETE FREEDOM OF MOVEMENT, AND FLEXIBLE LEAD ATTACHMENT OPTIONS. ITS UNIQUE DESIGN OFFERS YOU THE FLEXIBILITY OF MULTIPLE ADJUSTMENT POINTS TO ENSURE THAT YOUR DOG HAS A PROPERLY FITTING HARNESS TO ENSURE COMFORT, PROPER MOVEMENT, AND SAFETY.

WITH THE SLIP-OVER VERSION, YOUR DOG SIMPLY HAS THEIR HEAD THROUGH THE NECK LOOP. IF YOUR DOG DOES NOT LIKE HARNESSES SLIPPED OVER THEIR HEAD, THERE IS ALSO A BUCKLE-NECK VERSION WHICH SNAPS AROUND YOUR DOG'S NECK LIKE A NECKLACE. FOR DOGS WHO HAVE LARGER HEADS THAN NECKS, THE BUCKLE-NECK VERSION MAY WORK BETTER.

Perfect Fit Harnesses



- Modular design allows and secure and snug fit for almost any size & shape of dog
- Easy to clip around dog's neck and NOT put over head
- Adjustable in up to 5 different places
- Each piece can be replaced as or when needed
- Front piece comes with an additional D-ring as standard
- Safe for amputee dogs (Tripawed!)
- Difficult for escapologist dogs to get out of
- Calming for excitable dogs